

University of Northern Colorado

Scholarship & Creative Works @ Digital UNC

Hovenweep National Monument

Colorado National Parks

March 2024

US Dept of Interior (NPS) Hovenweep National Monument Square Tower Group: Square Tower

National Park Service of the United States

Follow this and additional works at: <https://digscholarship.unco.edu/hove>

Recommended Citation

National Park Service of the United States, "US Dept of Interior (NPS) Hovenweep National Monument Square Tower Group: Square Tower" (2024). *Hovenweep National Monument*. 2.
<https://digscholarship.unco.edu/hove/2>

This Article is brought to you for free and open access by the Colorado National Parks at Scholarship & Creative Works @ Digital UNC. It has been accepted for inclusion in Hovenweep National Monument by an authorized administrator of Scholarship & Creative Works @ Digital UNC. For more information, please contact Nicole.Webber@unco.edu.

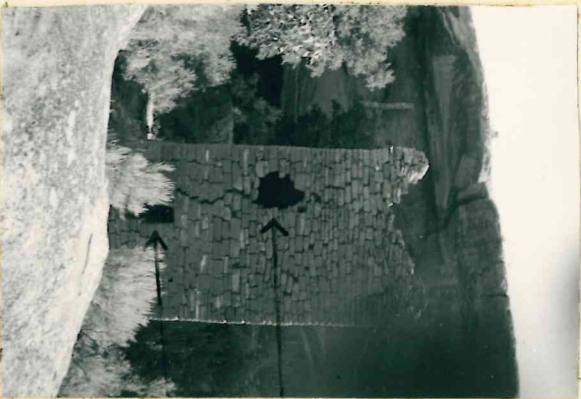
UNITED STATES
DEPARTMENT OF THE INTERIOR
NATIONAL PARK SERVICE

HOVENWEEP NATIONAL MONUMENT

SQUARE TOWER CANYON GROUP

THE SQUARE TOWER

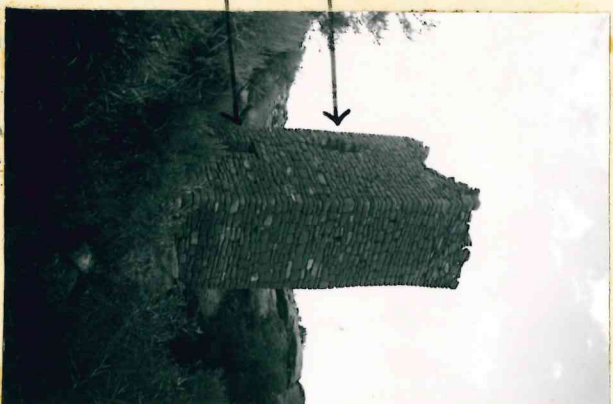
A.



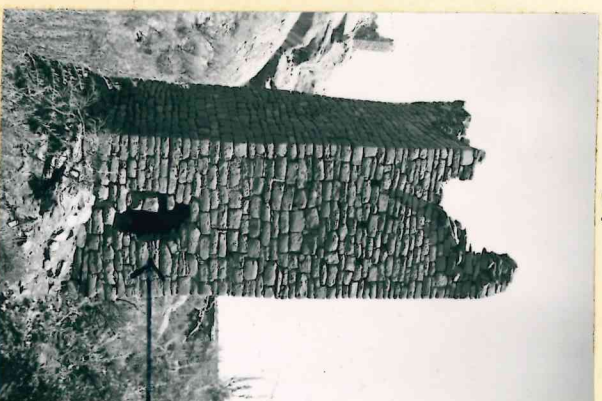
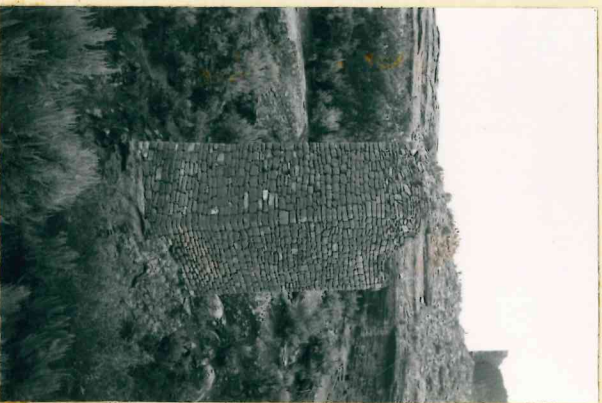
I

II

B.



A and B illustrate different views of the poorest side of Square Tower as regards preservation. IA, B is neither a doorway or window, but an unnatural hole. IIA, B is the only entrance to the building. Note in A the fissure, or cleft extending from I to II (this is C. D.)



III

not shown clearly in B). Cis the Tower's best angle. III is also an unnatural hole. A suggestion in stabilizing this tower might be to utilize iron bar braces in similar fashion to those employed so advantageously at Casa Grande. I and III of course must be repaired.