

University of Northern Colorado

Scholarship & Creative Works @ Digital UNC

Hovenweep National Monument

Colorado National Parks

US Dept of Interior (NPS) Hovenweep National Monument Square Tower Group: Hovenweep Castle

National Park Service of the United States

Follow this and additional works at: <https://digscholarship.unco.edu/hove>

UNITED STATES
DEPARTMENT OF THE INTERIOR
NATIONAL PARK SERVICE

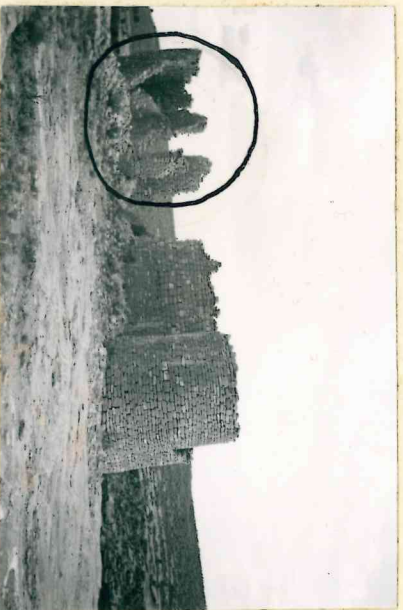
HOVENWEEP NATIONAL MONUMENT

SQUARE TOWER CANYON GROUP

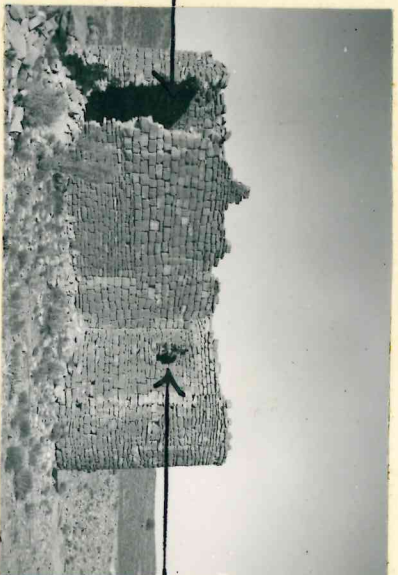
HOVENWEEP CASTLE

19

A.



B



Compare A with Fewkes' illustration, Bulletin #70, Bureau of American Ethnology, Plate 222, and it will be noted that large portions of the walls in the so-called eastern section (Fewkes) of the Castle (encircled) have collapsed in recent years. These should be restored to some extent, then capped, if they are to remain standing another

C.



20 years. Band C are two views of the western section. I B, the end wall, has fallen away and should be restored. II B is an unnatural hole (i.e., has been caused either by weathering, or the work of the vandals) and should also be repaired, so as to conform with the original contour of this semi-circular tower section.