

University of Northern Colorado

## Scholarship & Creative Works @ Digital UNC

---

Hovenweep National Monument

Colorado National Parks

---

### US Dept of Interior (NPS) Hovenweep National Monument Square Tower Group: Hovenweep Memorandum

National Park Service of the United States

Follow this and additional works at: <https://digscholarship.unco.edu/hove>

---

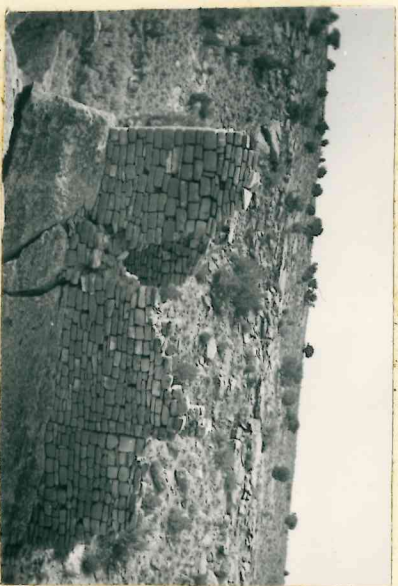
UNITED STATES  
DEPARTMENT OF THE INTERIOR  
NATIONAL PARK SERVICE

HOVENWEEP NATIONAL MONUMENT

SQUARE TOWER CANYON GROUP

STRONGHOLD HOUSE : ALSO  
CALLED GIBRALTER HOUSE  
(THREE VIEWS)

19



A



B

The inaccessible rock on which this building is perched, has settled and cracked subsequent to construction, as is clearly shown in A and B above, thereby causing large fissures to divide the midsections of the two sidewalls.  
From the interpretational angle, this structure, by virtue of its unique site and position, is one of the most instructive buildings



in the Square Tower Canyon Group, affording the visitor an excellent clue to the most probable motive the prehistoric Indians envisioned for its construction.

Therefore, let's by all means preserve Stronghold House.

Re-laying a few masonry courses, capping the wall tops, and other minor work and the foundation are recommended here