

OLD GROWTH CLASSIFICATION

STAND LOCATION AND SKETCH

Location / Site Number Plot 188 - Hermosa - stock trail

Project Name / Unit Number _____

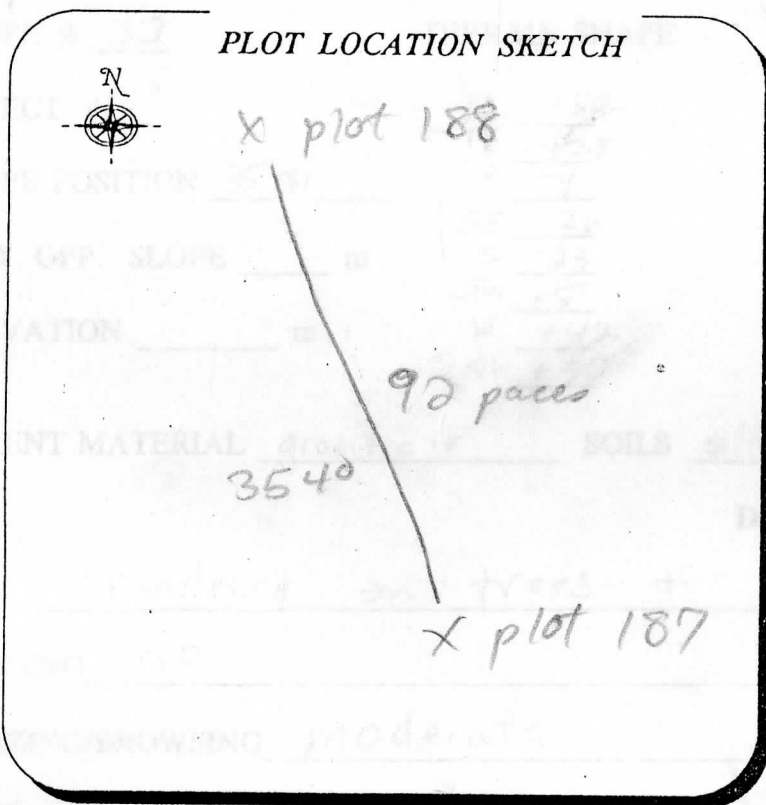
Plot Spacing: _____ Meters by _____ Meters

Reference Point Description: _____

Travel Route to Reference Point: from 187

SEC. _____ T. _____ R. _____ USGS 7.5 min. Quad

PLOT LOCATION SKETCH



in small ravine

From	To	AZ	DIST.	Corrections
187	188	354°	92 paces	

- Road, Improved
- Road, logging
- Trail
- Drainage, Intermittent
- Ridge
- Fence
- Cattleguard
- Reference Point (RP)
- Supplemental RP
- Plot Location Center
- Direction of Travel
- .3** Point and Point Number
- 97°** Azimuth
- CH** Chains

**PONDEROSA PINE OLD-GROWTH
HABITAT TYPE OR PLANT ASSOCIATION6**

FORM 3

DATE 7-6 FOREST San Juan DISTRICT _____ FIELD CREW JAT
 SITE NAME Hammosa LOCATION stock trail STAND 23 PLOT 188
 SERIES PIPO HABITAT TYPE Quaga PHASE _____

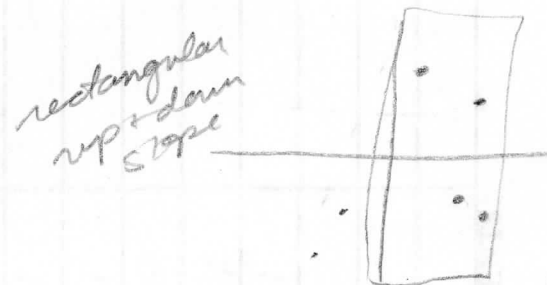
SPECIES CHECKLIST:

PIPO	Quaga	stndrd	Acla	Arlo/bi?
PSME	Rowo	POPR	Gefr	
PIPO	mare		POFI	
	Acgl		Viam	
	Cefe		Luar	
			Mfe	

Cohort
 NS -- 23m
 EW -- 10m

PLANT COLLECTION NOTES:

none collected



COMMENTS:

small ravine running NS - through PC - loads of Quaga regen
 some shrubs - few H+G again - Tom is going to skun
 whatever tree did the Coarse woody in the SE