

OLD GROWTH CLASSIFICATION

Location / Site Number Plot 276 - Archuleta Creek - Tr. 2 - San Juan

Project Name / Unit Number _____

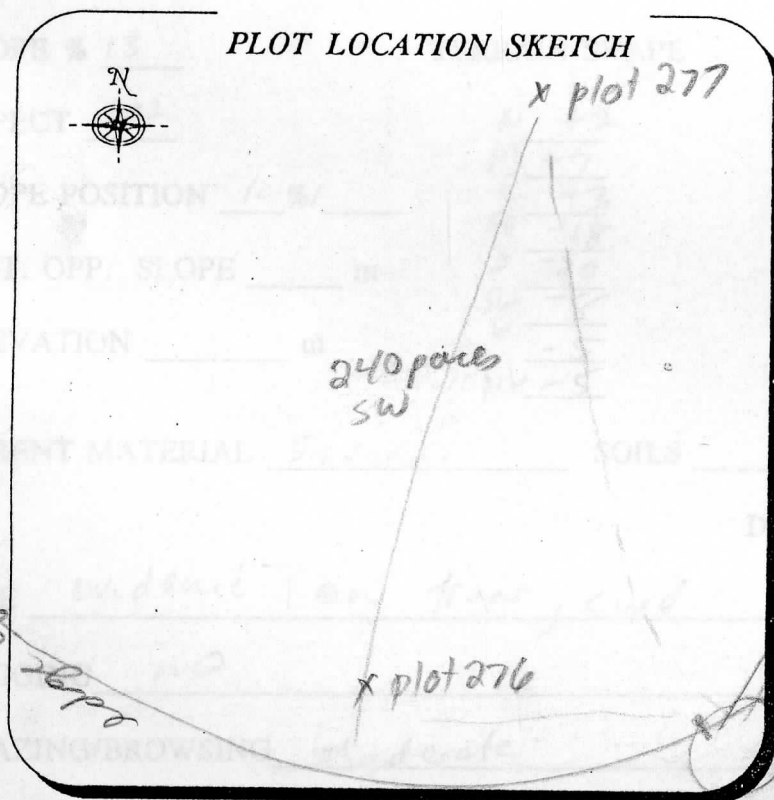
Plot Spacing: _____ Meters by _____ Meters

Reference Point Description: _____

Travel Route to Reference Point: from 277

SEC. _____ T. _____ R. _____ USGS 7.5 min. Quad

flagging will swing off to your left (NE)
stay straight - slightly SW - 240 paces
PC ~ 17.8 from dropoff into canyon



From	To	AZ	DIST.	Corrections
277	276	SW	240 paces	

- Road, Improved
- Road, logging
- Trail
- Drainage, Intermittent
- Ridge
- Fence
- Cattleguard
- RP Reference Point (RP)
- SRP Supplemental RP
- PC Plot Location Center
- Direction of Travel
- .3 Point and Point Number
- 97° Azimuth
- CH Chains

flagged here roots

PONDEROSA PINE OLD-GROWTH
HABITAT TYPE OR PLANT ASSOCIATION6

FORM 3

DATE 7-16 FOREST San Juan DISTRICT _____ FIELD CREW YAT

SITE NAME Archuleto Creek LOCATION tr 2 STAND 29 PLOT 270

SERIES PIPO HABITAT TYPE Quaga PHASE _____

SPECIES CHECKLIST:

PIPO Quaga Fear Era
Cemo Sihy Sese

? bladderpod
? dissected
Low ~~red/or yellow~~
? yellow aster - clumps

PLANT COLLECTION NOTES:

none collected

cohort
NS - 24m
EW - 21m

COMMENTS:

open, dry, some needles loose, canyon drops off
to South - careful! little H+G